

SSH Secure Shell Client & File Transfer Quick Start Guide

1) Installation

The installation is carried out by a standard installation wizard. The wizard will prompt you for information and will copy the program files and set up the SSH Secure Shell client.

To install SSH Secure Shell for Workstations Windows Client, follow these steps:

- 1) Locate the installation file SSHSecureShellClient-x.y.z.exe (where x.y.z corresponds to the version number), either on the installation CD or in the download directory, depending if you purchased SSH Secure Shell on CD or downloaded it. Double-click the installation file, and the installation wizard will start.
- 2) Follow the wizard through the installation steps and fill in information as requested.

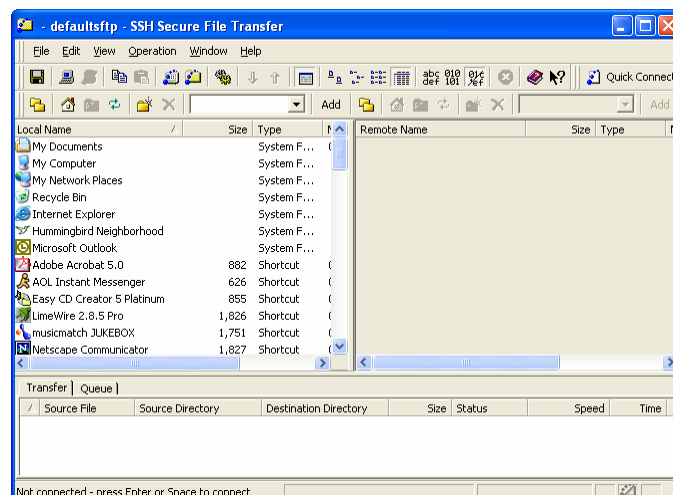
The default installation directory is Program Files_ SSH Communications Security_ SSH Secure Shell located on your system partition (typically the C drive).

The installation will also create a new program group in the *Programs* menu under the *Start* menu. The default name for this program group is *SSH Secure Shell*.



2) Configuration

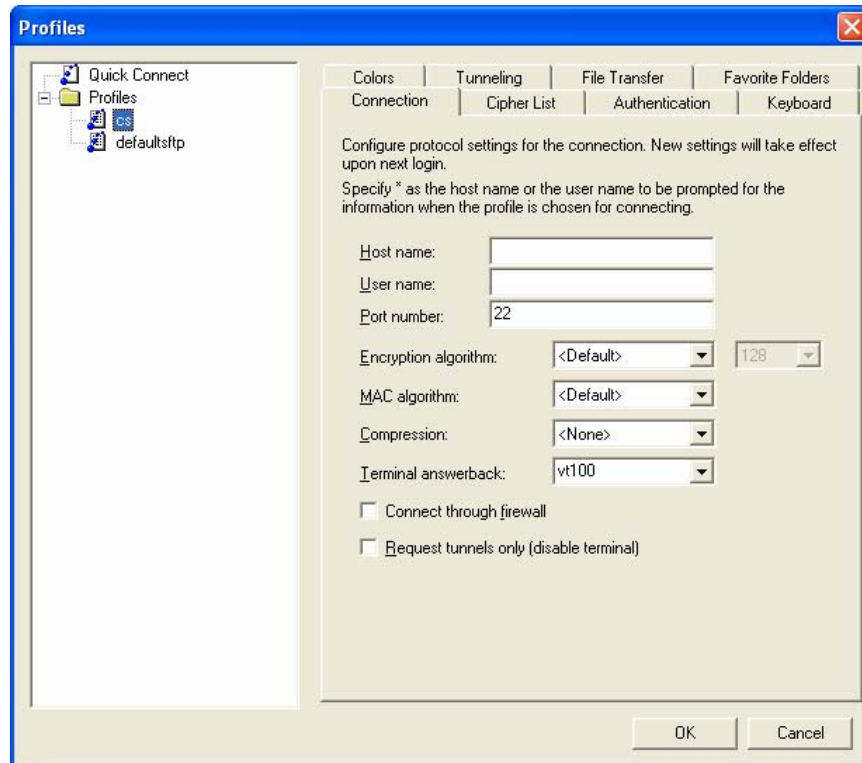
- Setup A Secure File Transfer Connection
 - 1) Double Click on the desktop icon labeled "SSH Secure File Transfer Client" This will open the following screen:



- 2) Under the file menu select profiles and “Add Profile” You should see a box asking you for a profile name like this. In the space provided please enter “cs”. Then click Add To Profiles. This will return you to the main screen.

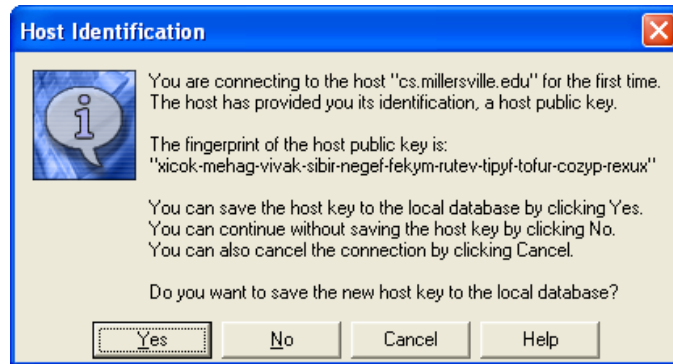


- 3) Next we must set the options for our new profile. From the File menu select Profiles then Edit Profile. This brings up the Profiles screen.

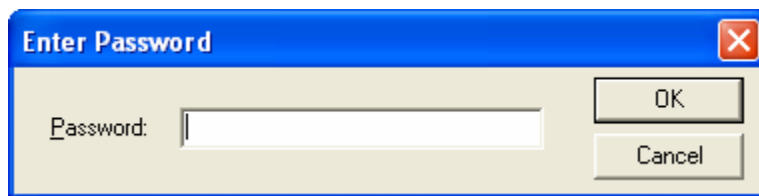


- 4) Ensure that our CS profile is selected by left clicking on the profile name.
- 5) Now on the connection tab fill in the following data in the spaces provided.
 - Hostname cs.millersville.edu
 - Username Your Linux Lab Username
 - Port Number 22
 - Encryption Algorithm <Default>
 - MAC Algorithm <Default>
 - Compression <None>
 - Terminal Emulation ANSI
 - Leave Both Check Boxes at the bottom UNCHECKED
- 6) All setting on the other tabs are Ok. Nothing else needs to be changed. Accept the new profile settings by clicking the OK button on the profiles window. This will return you to the main SSH File Transfer Screen.

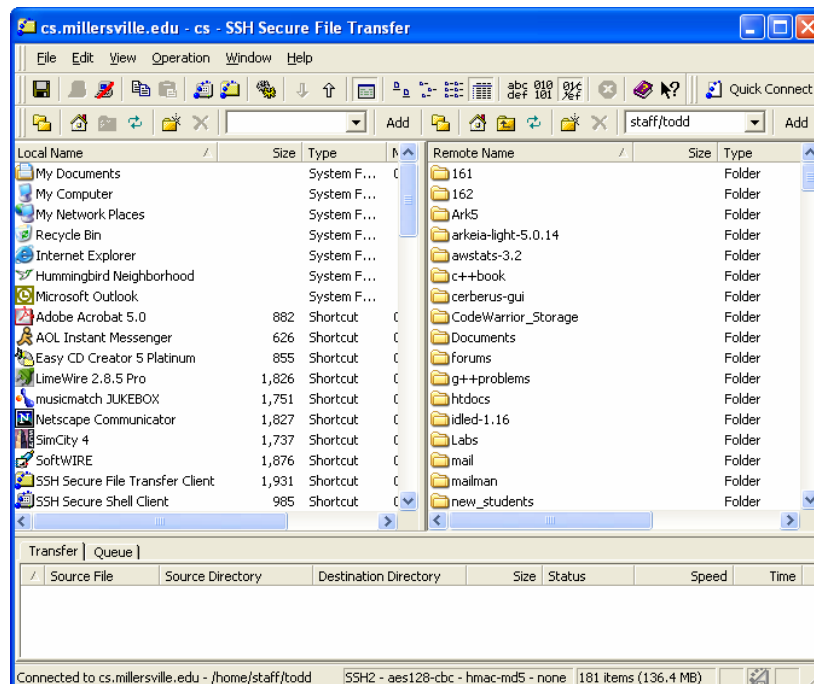
- 7) To connect to the profile you just created use the Connect option on the File menu. If this is your first time connecting you will see a screen like this. This is the Host identification window and wanting you to accept its security KEY. You want to answer yes to this question.



- 8) After accepting the host key it will ask you for your password. Please enter your Linux Lab Password.



- 9) If your password is accepted by the server your screen will now look like the screenshot below. On the left hand side of the screen shows the files on your local machine, on the right are your files on the CS server. You can navigate directories just like in windows explorer. You can transfer files from one machine to another just by dragging and dropping them from one side to the other.



10) If you need more help with this software please download the users manual from our website. The manual will cover more features of the software.

<http://cs.millersville.edu/ssh2winclient.pdf>

If you have any questions about this software please contact me.

Todd E Echterling
Computer Science
Millersville University
143 Roddy Hall
todd.echterling@cs.millersville.edu